

OUR MISSION

Partnering with the community to assist children, youth and their families in their individual quest for health and wholeness through quality, faithful, professional services.



THE BOARD OF DIRECTORS

Shari Smith, President
Oliver A. Berwin, Jr., President Emeritus
James L. Brooks, Vice President Emeritus
E. David Viehmann, Vice-President
Dennis B. Mertz, Corporate Secretary
Paul G. Flynn, Treasurer
Stephen R. Schroeder, Asst. Treasurer
Robert H. Branom Alan Hautly
James L. Brooks Gail Saxton
Gerhard K. Glass Lucille Smith
Ron Hail Annie L. Williams

ADVISORY BOARD

Dr. Robert A. Baur, Executive Director Emeritus
David R. Frensey, Board Member Emeritus
James W. Smith, Board Member Emeritus
Robert Becker, Board Member Emeritus

ADMINISTRATIVE STAFF

Michael P. Brennan, Executive Director
Sharon L. Veit, St. Louis Operations Director
Duane L. Lewis, Kansas City Steppingstone Director
Sharon Fenoglio, CFRE, Development Director
Netta Kowalski, Controller
Betty Markowski, Business Operations Director

2013 ANNUAL REPORT

Editor: Laura Kilcullin
Design: GrafXWorx, Fee McCaskill

ECH EVERY CHILD'S HOPE

8240 St. Charles Rock Road
St. Louis, MO 63114
(314) 427-3755
www.everychildshope.org

STEPPINGSTONE

5100 Noland Road
Kansas City, MO 64133
(816) 356-0187
www.steppingstonekc.org

ECH Every Child's Hope is a private not-for-profit childcare agency, voluntarily affiliated with the Council for Health and Human Services Ministries related to the United Church of Christ. ECH Every Child's Hope adheres to Federal and State laws which prohibit discrimination in the delivery of services on the basis of race, color, national origin, age, sex, handicap/disability or religious belief.

Certified by: The Council on Accreditation
Member of: Missouri Coalition of Children's Agencies (MCCA), Child Welfare League of America
Approved by: Charities Committee, Chamber of Commerce of Metropolitan St. Louis, MO, Better Business Bureau.
Founding Member of the Missouri Alliance for Children & Families

ECH Every Child's Hope is not a United Way Agency.



ech EVERY CHILD'S HOPE

ech

EVERY CHILD'S HOPE | 2013 ANNUAL REPORT

ECH changes lives
ECH offers new beginnings
ECH provides hope



For 155 years, ECH Every Child's Hope has continually searched for new ways to reach kids... new ways to teach youth life skills and independence... new ways to bring families together.

But one constant thread, throughout the years, has been the quality of our staff. The staff recognizes the importance of individualized programs for each child and family. The staff gives hope to those we work with when they thought hope was lost. The staff develops relationships with young people and their families that helps them heal and hope for a better way of life, a better future.



A Therapy Model Provides Kids Extra Support and Hope

Many of our young people in Residential Treatment do not have a relationship with a family member to help them through their therapy and learn to deal with their issues. So, ECH has adapted a therapeutic model, known as Trauma Focused Cognitive Behavioral Therapy, or TF-CBT.

TF-CBT is a therapeutic model for young people who have experienced a traumatic event in their life. Ideally, we would have a caregiver be a part of the program, helping to reinforce the therapy, but due to some of the issues our kids face, a caregiver cannot always be present.

So, the young person then picks a staff person to act their caregiver during therapy. Mr. Brown, a Youth Care Specialist, was selected to work with one of the young men in the Male Safe Intensive Unit. "I thought it was an interesting idea," says Mr. Brown.

"It has helped me get to know this young man better. Now I am like a mentor, parent, uncle to him." Mr. Brown also feels that it has strengthened his relationship with the young man and others in the unit. "I have used what I learned to help me understand others."

Building a Bridge between Mom and Daughter

Annie fell behind in school, dealing with many changes in her family life, but she had a great group of friends and loved music. Her mom clearly loved her and was doing the best she could. But, the mother and daughter relationship turned out to be causing the strain.

After a family tragedy, mom expected Annie to move on too quickly, causing a split in their relationship. So Annie sought help and the family began meeting with Alina once a week for three to four hours.

First Annie and Alina would sit down and talk about what was going on, then Alina would meet with mom. Then all three would sit down together. Alina was able to identify a pattern to the family's issues and together they developed a plan to address them. While things between mother and daughter is still strained, Alina was able to build a relationship with both and move the family on to a happier place, with the keys for success.

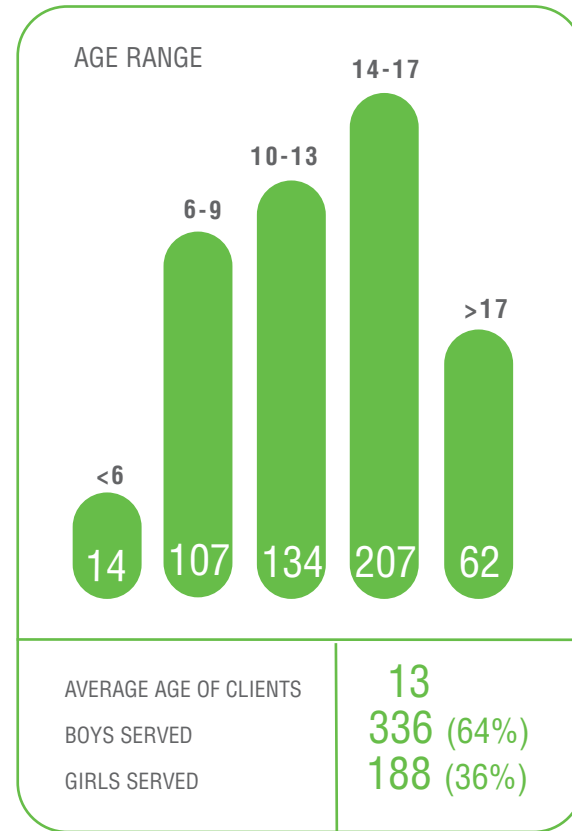


During fiscal year 2013, ECH served more than 1,400 children, youth and families.



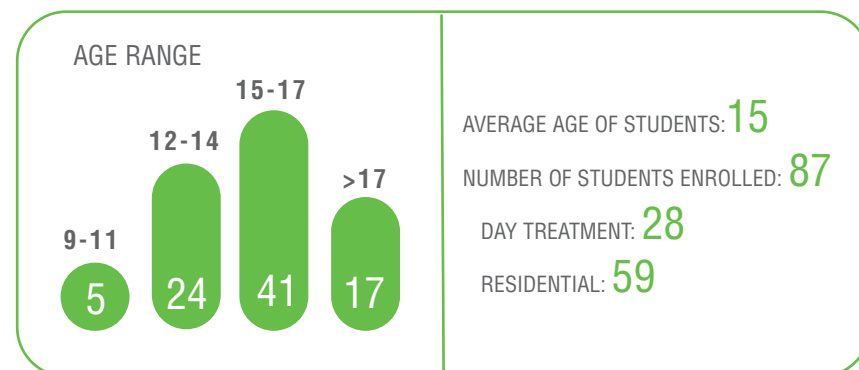
Outpatient Psychiatry

With two psychiatrists, ECH is able to offer a unique program through funds received from the St. Louis County Children's Service Fund. Doctors are able to work with the kids in the county for free.



ECH Schools

ECH School accepts young people from St. Louis, St. Louis County and St. Charles County, helping them succeed in school and return to their home school district for graduation.



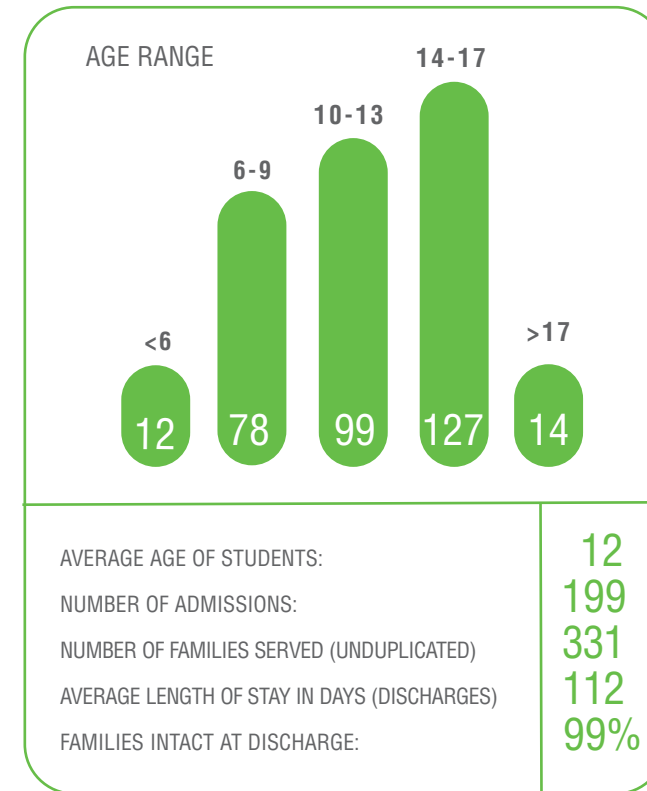
Early Education Center

The Early Education Center at ECH serves children, ages 2 1/2 to 5. 21 of the 69 kids served received funding through HeadStart.



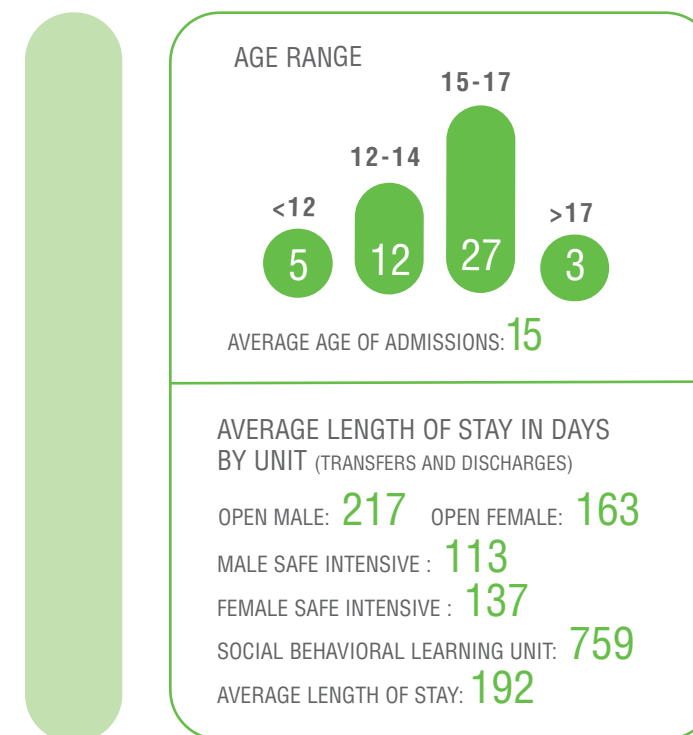
Family Solutions for Kids

Case Mangers with Family Solutions for Kids offer therapeutic care in the family home, working to keep the families together and avoid residential placement.



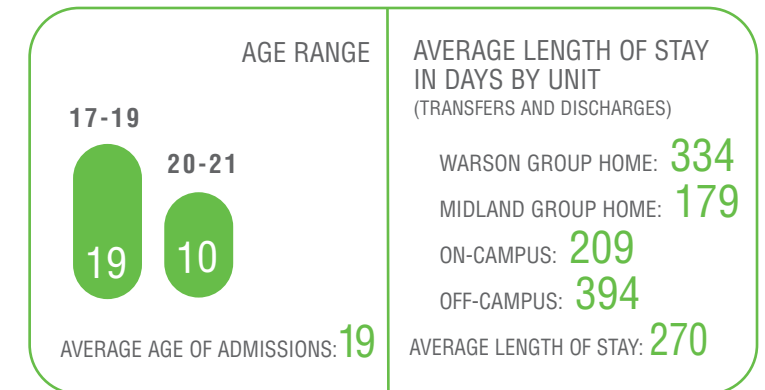
Residential Treatment

Residential Treatment at ECH provides girls and boys a place to live while receiving the therapeutic care they need.



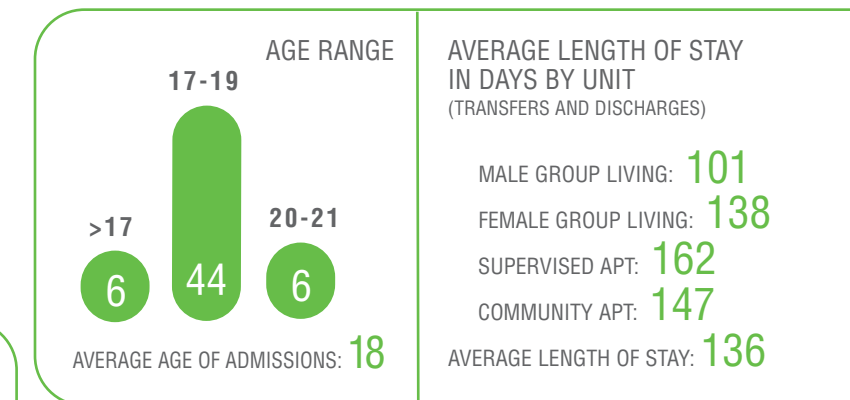
Steppingstone: St. Louis

Thanks to a grant from the St. Louis County Children's Service Fund, Steppingstone in St. Louis has been able to accept more young people into the program, including homeless and parenting teens.



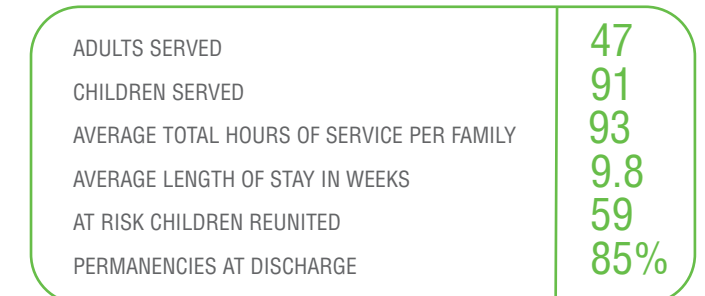
Steppingstone: Kansas City

Steppingstone in Kansas City offered 93 young adults the life skills needed to succeed during fiscal year 2013.



Family Reunification Services

Family Reunification Services helps youth and families reunite following placement at residential facilities and foster care.



WHO SUPPORTS THE COST OF CARING

	2012	2013
<i>Residential</i>		
Dept. of Social Services	\$1,830,484	\$1,794,875
Missouri Alliance	821,612	883,765
Children's Permanency Partnership	35,480	349,725
St. Louis Partners	137,415	147,588
Cornerstones of Care	200,240	107,745
Catholic Charities of Kansas City	4,335	6,460
Family Advocates	102,378	29,038
USDA	74,430	62,941
Juvenile Courts	7,285	76,975
Dept. of Mental Health	482,644	388,849
Jackson County Mental Health	443,702	514,563
Division of Youth Services	48,294	34,635
Private Insurance	2,770	22,420
Medicaid	123,928	141,485
<i>Early Education Center</i>		
	\$ 305,082	\$ 287,008
<i>Family Connections</i>		
	\$1,338,982	\$1,065,234
<i>On Grounds School</i>		
	\$ 956,670	\$1,000,968
SUB TOTAL	\$6,915,731	\$6,914,274
<i>Contributions</i>		
Churches	132,097	103,141
Individuals	198,955	264,489
Foundations	32,689	71,619
Corporations	37,951	34,018
Special Events	145,728	177,373
Income From Trusts	47,615	80,887
Federal Grant	200,000	71,911
Government Grants	1,180,496	1,312,934
In-Kind Donations	71,137	63,866
SUB TOTAL	\$2,046,668	\$2,180,238
<i>Other Income</i>		
	\$ 167,311	\$1,411,695*
TOTAL	\$9,129,710	\$10,506,207
TOTAL SUPPORT OF CARING (INCOME)	\$9,129,710	\$10,506,207



To learn about specific programs and 2013 statistics, visit our website: www.everychildshope.org



TOTAL FREE SERVICES FOR 2013: \$3,428,603

COST OF CARING

	2012	2013
St. Louis Residential Program	\$3,381,906	3,464,616
Kansas City Steppingstone	1,401,273	1,339,269
Early Education Center	420,674	434,538
St. Louis Steppingstone	394,700	441,969
Transitional Living	543,002	584,302
Group Homes	181,324	0
Community Services	1,903,122	1,969,052
Administration	1,291,222	1,366,078
Marketing	49,250	46,819
Public Relations	128,271	141,911
Development	296,387	371,018
Depreciation	543,757	536,327
On Grounds School	756,623	770,941
Total Cost of Caring (Expense)	\$11,291,511	\$11,466,840
Total Support of Caring (Income)	\$ 9,129,710	\$10,506,207
Total Cost of Caring (Expense)	\$11,291,511	\$11,466,840
Program Surplus/(Deficit)	(2,161,801)	(960,633)
Reserve Fund Earnings	\$ 556,459	\$ 570,889
Supplement from Reserve Fund	\$ 1,465,531	\$ 1,267,603
Total Surplus/(Deficit)	(139,811)	877,859*
<i>Capital Expenditures</i>	\$ 233,935	\$ 1,495,021
<i>Donations to Reserve Fund</i>	\$ 1,140,297	\$ 336,324



*During Fiscal Year 2013, a storm extensively damages the buildings and roofs on the St. Charles Rock Road campus at ECH in St. Louis. This resulted in a large claim to our insurance company, and thus a large increase in "other income." This income was then used to pay for the storm damage done on campus.